

BJÖRK



ELEGANT AND STYLISH

BJÖRK product line is crafted with a focus on the user experience and the daily routines of maintenance staf.

The series offers a complete range of products in a unified design, enabling the creation of a coherent solution that is visually appealing.

Every detail has been considered — from safety with rounded edges to intuitive operation.

The changing table is ergonomic and can be easily operated with one hand, while dispensers and hand dryers are touch-free.

Nothing is accidental. Everything is designed to perform flawlessly in busy restroom environments — 24/7.



There are places where people stay for moment. And where the design must perform every single second

HAND DRYER

- Powder coated stainless steel
- Touch-free warm-air hand dryer with IR sensor
- Drying cycle of 10-15 sec.
- Adjustable sensor, motor speed and heating
- Top plate available in six different colours
- 5-year warranty
- LED light indicates when machine is in use



reddot award 2015
winner

SPECIFICATIONS

Colour:
Matt black — RAL 9005
Classic white — RAL 9003
Optional in any classic RAL colour

Dimensions:
H: 330 mm
B: 205 mm
D: 183 mm

Sound level:
76 dBA





 COLOUR-CUSTOMISABLE

DISPENSERS

Touch-free

- Powder coated stainless steel
- 950 ml = 800-950 doses
- Battery-operated
- LED light indicates when dispenser is in use
- Top plate available in six different colours
- Optional drip tray
- 2-year warranty

Manual

- Powder coated stainless steel
- 1200 ml soap/disinfection = 1000-1200 doses
- For foam soap, liquid soap and disinfectant
- Top plate available in six different colours
- Optional drip tray
- 2-year warranty

Can be mounted on floor or table stand.



SPECIFICATIONS	
Touch-free dispenser	Manual dispenser
Colour: Matt black — RAL 9005 Classic white — RAL 9003 Optional in any classic RAL colour	Colour: Matt black — RAL 9005 Classic white — RAL 9003 Optional in any classic RAL colour
Dimensions: H: 327 mm B: 139 mm D: 128 mm	Dimensions: H: 373 mm B: 128 mm D: 139 mm

TOILET ROLL HOLDERS

Double

- Powder coated stainless steel
- Holds two standard rolls
- 2-year warranty

Jumbo

- Powder coated stainless steel
- Suited for high-traffic restrooms
- Holds one Jumbo roll + one standard roll
- 2-year warranty



SPECIFICATIONS	
Double	Jumbo
Colour: Matt black — RAL 9005 Classic white — RAL 9003 Optional in any classic RAL colour	Colour: Matt black — RAL 9005 Classic white — RAL 9003 Optional in any classic RAL colour
Dimensions: H: 161 mm B: 278 mm D: 131 mm	Dimensions: H: 470 mm B: 455 mm D: 171,5 mm





PAPER DISPENSERS

Centrefeed paper towel dispenser

- Powder coated stainless steel
- Holds common sizes of centrefeed rolls
- Top plate available in six different colours
- 2-year warranty

Paper towel dispenser

- Powder coated stainless steel
- Capacity: 180 pcs. 3-ply Z/W/C-folded paper towels
- Easy to clean
- Powder coated stainless steel
- 2-year warranty



SPECIFICATIONS	
Centrefeed	Paper towel dispenser
Colour: Matt black — RAL 9005 Classic white — RAL 9003 Optional in any classic RAL colour	Colour: Matt black — RAL 9005 Classic white — RAL 9003 Optional in any classic RAL colour
Dimensions: H: 330 mm B: 205 mm D: 187 mm	Dimensions: H: 380 mm B: 330 mm D: 110 mm

The soap dispenser and
hand dryer should work.
Even after thousands of hands

Hygiene solutions
— designed to be used



SANITARY BIN

- Powder coated stainless steel
- 3 L capacity
- Bag holder
- 2-year warranty

- Powder coated stainless steel
- 12 L capacity
- Spring-loaded bag holder
- 2-year warranty



SPECIFICATIONS	
Sanitary bin, 3 L	Sanitary bin, 12 L
Colour: Matt black — RAL 9005 Classic white — RAL 9003 Optional in any classic RAL colour	Colour: Matt black — RAL 9005 Classic white — RAL 9003 Optional in any classic RAL colour
Dimensions: H: 254 mm B: 139 mm D: 135 mm	Dimensions: H: 400 mm B: 330 mm D: 134 mm



 COLOUR-CUSTOMISABLE



 COLOUR-CUSTOMISABLE

WASTE BIN

- Powder coated stainless steel
- 18 L capacity
- Side-hinged cabinet door
- Matt black, classic white and all RAL classic colours
- 2-year warranty



SPECIFICATIONS

Colour:
Matt black — RAL 9005
Classic white — RAL 9003
Optional in any classic RAL colour

Dimensions:
H: 500 mm
B: 260 mm
D: 241 mm

BABY CHANGING STATION

- Powder coated steel and aluminium
- Certified in accordance with DIN EN 12221-1:2008 + A1:2013
- Rounded edges for optimal safety
- Carrying capacity of up to 80 kg
- 2-year warranty

Paper dispenser for baby unit

- Powder coated stainless steel
- Complements the baby changing station
- 2-year warranty



SPECIFICATIONS

Baby changing station

Colour:
Matt black — RAL 9005
Classic white — RAL 9003
Optional in any classic RAL colour

Dimensions:
H: 782 mm (folded up)
H: 332 mm (folded down)
B: 552 mm
D: 100 mm (folded up)
D: 751 mm (folded down)

Paper towel dispenser

Colour:
Matt black — RAL 9005
Classic white — RAL 9003
Optional in any classic RAL colour

Dimensions:
H: 211 mm
B: 290 mm
D: 62 mm





 COLOUR-CUSTOMISABLE

MIRROR

- Powder coated stainless steel
- Versatile hanging options. Horizontally or vertically
- Suited for entryways, bedrooms, or bathrooms
- Can be combined with all product lines: BJÖRK, LOKI, TAPS, and STAINLESS DESIGN
- 2-year warranty

SPECIFICATIONS
Colour: Matt black — RAL 9005 Classic white — RAL 9003 Optional in any classic RAL colour
Dimensions: H: 1000 mm B: 500 mm



GRAB BARS

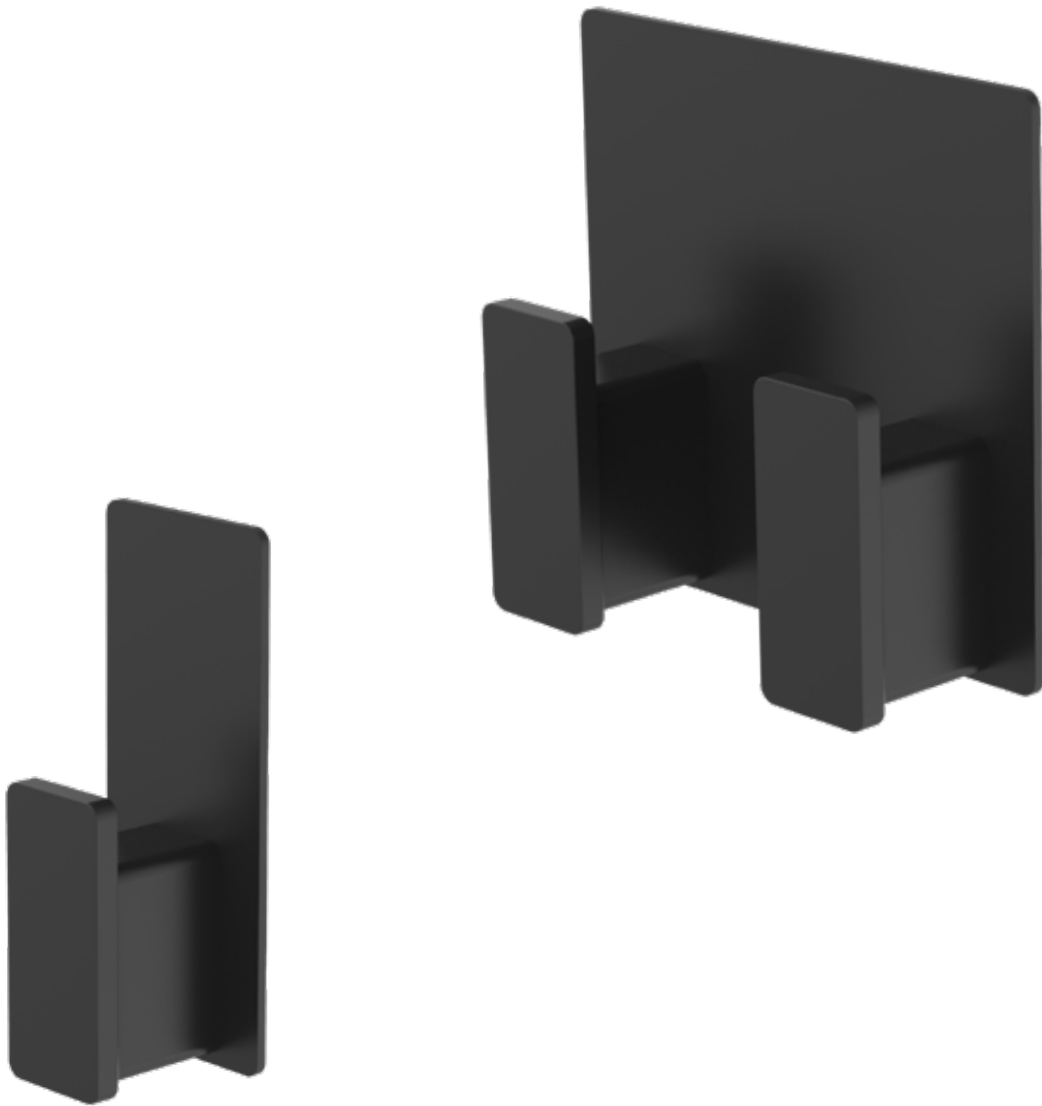
- Powder coated stainless steel
- 4 sizes
- Enhance and ensure accessibility and stability for everyone
- Can be combined with all product lines: BJÖRK, LOKI, TAPS, and STAINLESS DESIGN
- 2-year warranty

SPECIFICATIONS
Colour: Matt black — RAL 9005 Classic white — RAL 9003 Optional in any classic RAL colour
Dimensions: L: 450, 610, 915, 1067 mm H: Ø32



HANGERS

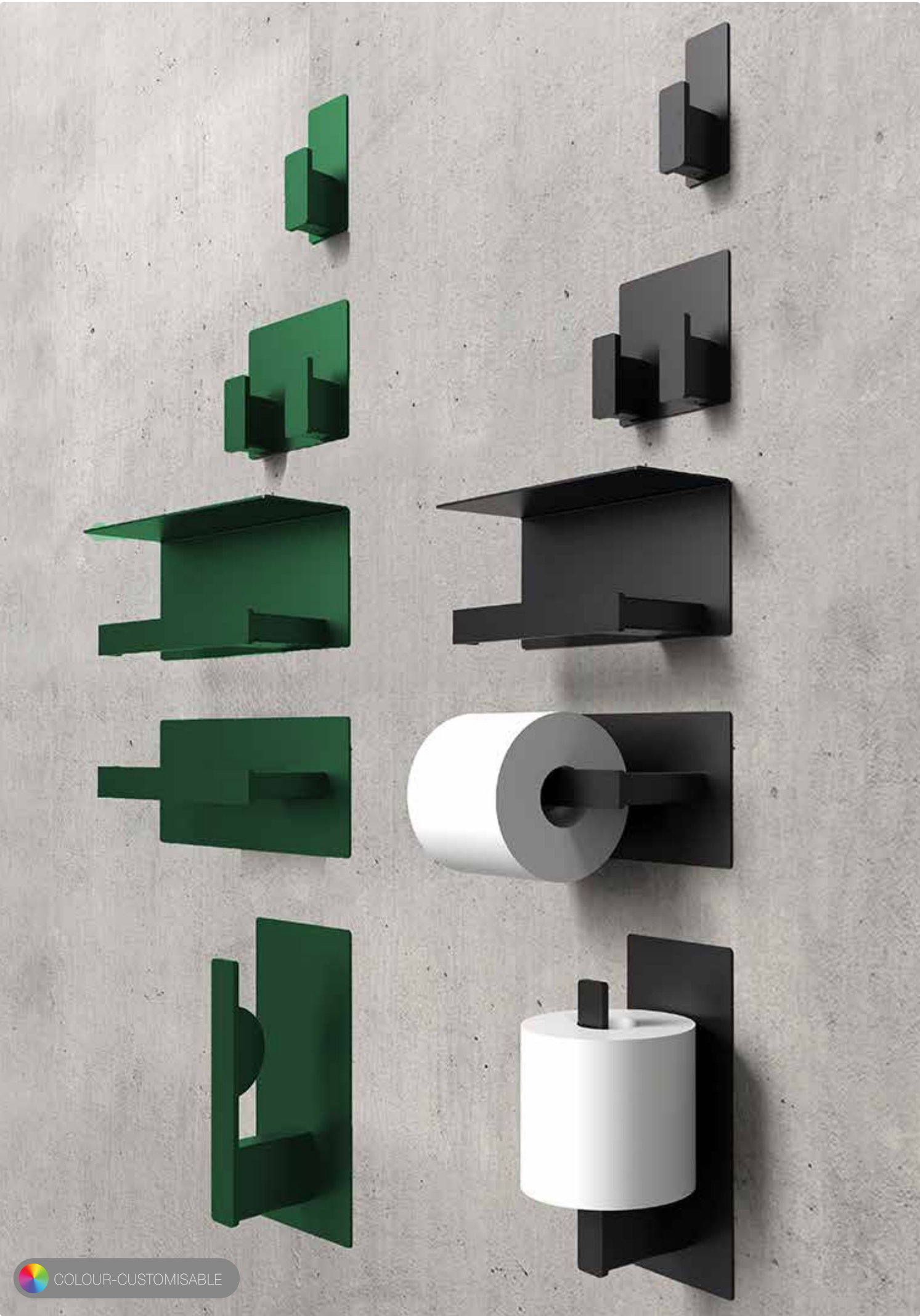
- Powder coated stainless steel
- Available in 2 sizes; single or double
- Suited for offices, entryways, bedrooms, or bathrooms
- Back-to-back mounting option
- 2-year warranty



SPECIFICATIONS		
Single hanger	Double hanger	Back-to-back-mounting
Colour: Matt black — RAL 9005 Classic white — RAL 9003 Optional in any classic RAL colour	Colour: Matt black — RAL 9005 Classic white — RAL 9003 Optional in any classic RAL colour	The products can be mounted back-to-back on both sides of a wall.
Dimensions: H: 100 mm B: 40 mm D: 33 mm	Dimensions: H: 100 mm B: 107 mm D: 33 mm	

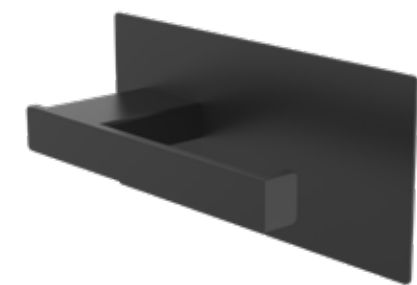


 COLOUR-CUSTOMISABLE

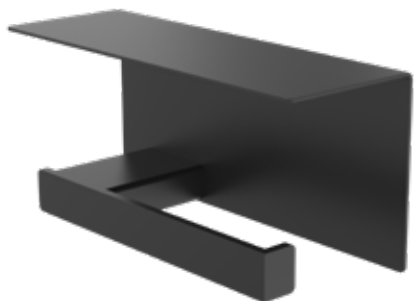


TOILETPAPIRHOLDERE

- Powder coated stainless steel
- Standard toilet roll holder
- Capacity: 1 standard size paper roll
- Available as right- and left-oriented
- Ideal for low to medium traffic restrooms
- Back-to-back mounting option
- 2-year warranty



- Powder coated stainless steel
- Standard toilet roll holder with shelf
- Capacity: 1 standard size paper roll
- Available as right- and left-oriented
- Ideal for low to medium traffic washrooms
- Back-to-back mounting option
- 2-year warranty



- Powder coated stainless steel
- Spare roll holder
- Capacity: 1 standard size paper roll
- Ideal for low to medium traffic washrooms
- Back-to-back mounting option
- 2-year warranty



SPECIFICATIONS		
Standard toilet roll holder	Standard toilet roll holder with shelf	Spare roll holder
Colour: Matt black — RAL 9005 Classic white — RAL 9003 Optional in any classic RAL colour	Colour: Matt black — RAL 9005 Classic white — RAL 9003 Optional in any classic RAL colour	Colour: Matt black — RAL 9005 Classic white — RAL 9003 Optional in any classic RAL colour
Dimensions: H: 220 mm B: 100 mm D: 77 mm	Dimensions: H: 220 mm B: 100 mm D: 77 mm	Dimensions: H: 220 mm B: 100 mm D: 77 mm

BACT-TO-BACK MOUNTING

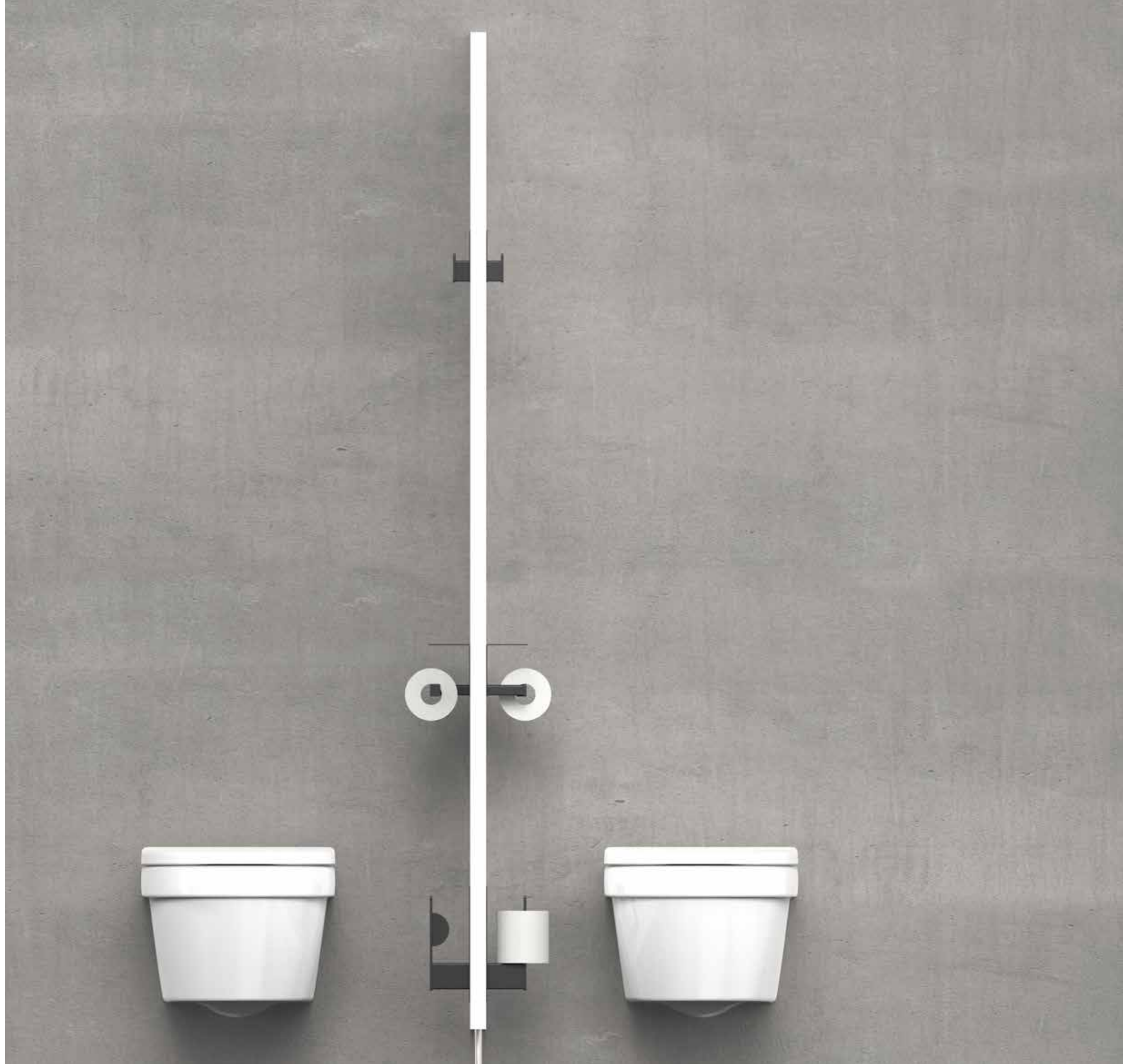
The back-to-back mounting option is a smart and space-saving solution that maximizes efficiency and optimizes the utilization of available space.

By mounting products on both sides of a wall you get numerous advantages.

Space is a valuable commodity in any environment, whether it's a public or commercial space. The back-to-back mounting option allows for the consolidation of products on a single wall, effectively doubling the functionality without occupying additional space. This is particularly beneficial in compact areas where every inch counts.

Moreover, this mounting method damages the walls less and enhances the aesthetics of the space by eliminating clutter and providing a clean and streamlined appearance.

With products neatly arranged on both sides of the wall, the overall visual impact is organized and visually appealing. This not only contributes to a more polished and professional look but also creates a more pleasant and conducive environment.



DAN DRYER A/S
Tåsingevej 2
DK - 8940 Randers SV

+45 8641 5711
info@dandryer.com
dandryer.com

